

# MEDSI2006 Vender Exhibition Guide

Apr. 17, 2006

## 1. Schedule of exhibition

May 24, 2006 (Wed) 9:00 – 18:00

May 25, 2006 (Thu) 9:00 – 16:00

## 2. Venue

Gallery 4 on the B1 floor in the Egret Himeji (see Figs. 1 and 2).

(The poster presentation is held in the next galleries from 14:00 to 16:00.)

## 3. Exhibition booth

Area: W 2500 mm × D 1000 mm

You can use

- a part of backboard (W 2500 mm × H 2730 mm)
- a table (W 1800 mm × D 600 mm × H 700 mm)
- two chairs
- electric sockets of 100 V

If you require power over 200 W, please contact us.

Other accessories (nameplates, table cloth, etc.) are not prepared.

Your original-design booth can open within the specified area.

## 4. Setup

May 23 (Tue) 14:00 – 18:30

If you carry in packages by yourselves, ...

1. Pull over to the carry-in-and-out entrance (see Fig. 3).  
The height of the entrance is 3.5 m.
2. Check in at the safety control center.
3. Bring the packages to B1 floor with a carry-in-and-out elevator.

You can use two carriages.

Elevator size:

Entrance: W 1500 mm × H 2490 mm

Inside: W 1800 mm × D 2100 mm × H 2490 mm

Weight limit: 1,750 kg

4. Check out at the safety control center.
5. Take the vehicle out of the entrance as soon as possible.

If you send packages by parcel delivery service, ...

Specify the delivery date as **May 23, 2006**.

Send to

MEDSI2006 Vendor Exhibition

Gallery 4 on the B1 floor

Honmachi 68-290, Himeji-shi, Hyogo 670-0012, Japan

Tel: +81-792-22-4630

## 5. Clear-up

May 25 (Thu) 16:00 – 18:30

Carry the packages out of the Egret Himeji until 18:30.

If you carry out packages by yourselves, refer to “Setup”.

You can use parcel delivery services, Kuroneko-Yamato and FedEx.

1. Count rough number of necessary waybills.
2. Contact the floor staff **by 15:00 on May 24**.
3. For FedEx, complete commercial invoices.

## 6. Other information

Park your cars in pay parking lots, such as the Egret parking.

Coin-operated lockers are available for your valuables.

If you have questions about the vendor exhibition, please contact the conference secretariat:

Kazuhiro Tohma (SPring-8)

Aya Inobe (SPring-8).

E-mail: [medsi2006@spring8.or.jp](mailto:medsi2006@spring8.or.jp)

Phone: +81-792-22-4630 (from May 23 to 26)

+81-791-58-0987 (otherwise)

Fax: +81-791-58-0988

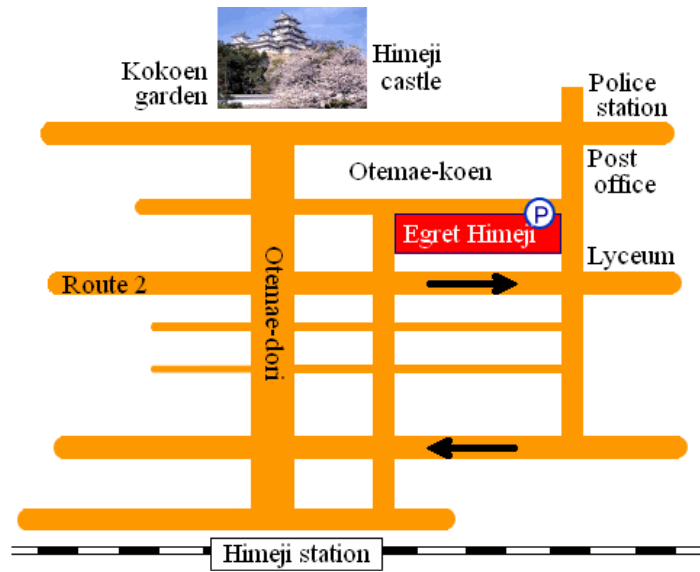


Fig. 1. Rough map around the Egret Himeji.

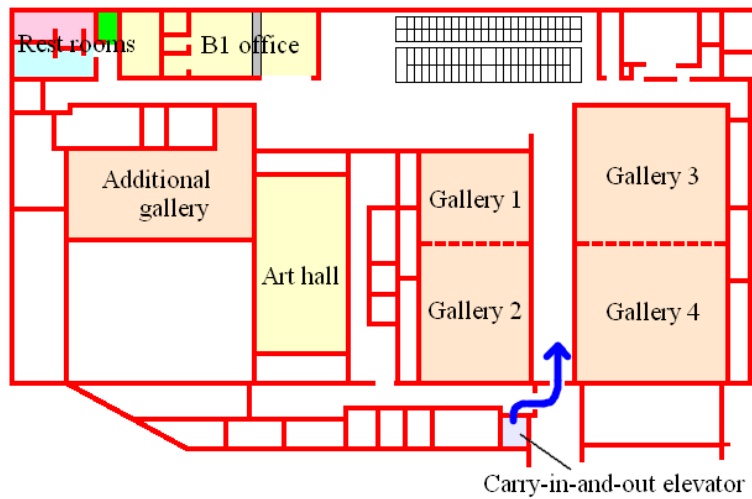


Fig. 2. Map of B1 floor.

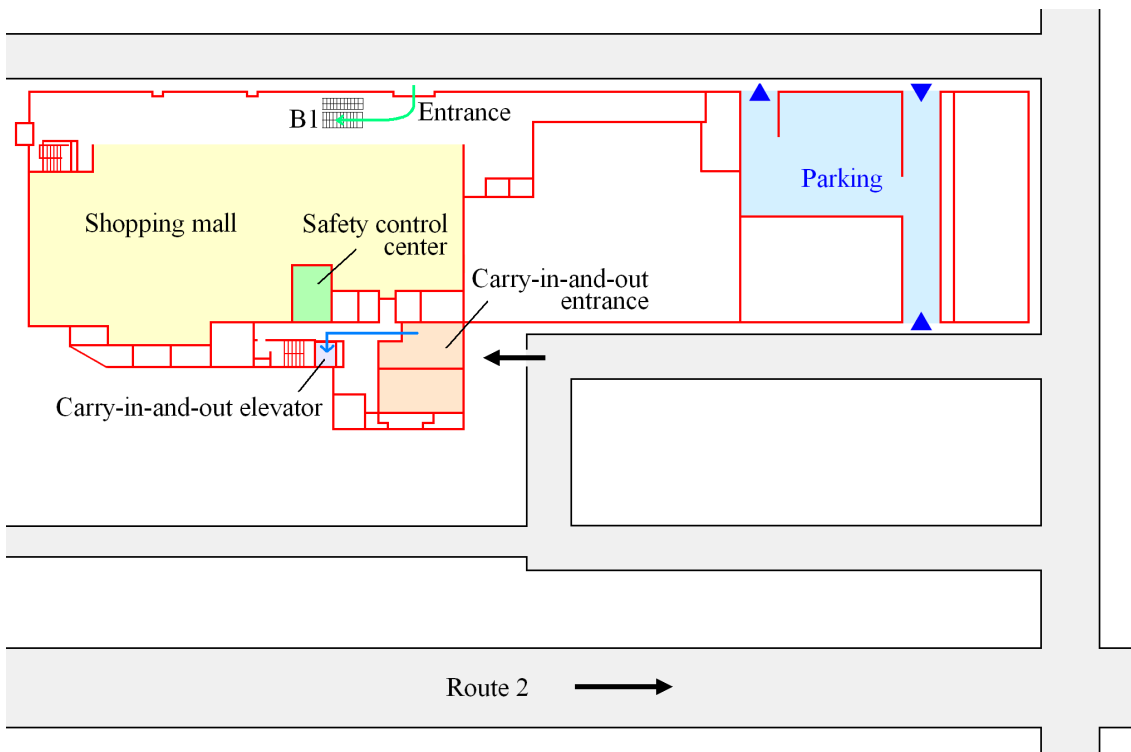


Fig. 3. Access to the carry-in-and-out entrance.